



# WELCOME

## 2024 JISEA Annual Meeting Opening Session

Feb. 26–27, 2024

Elizabeth Doris



# Opening Session



# Meeting Goals and Elements

Identify, frame, and build expertise around emerging, complex energy system challenges



**Collaborate** in discussion panels on emerging clean energy questions.



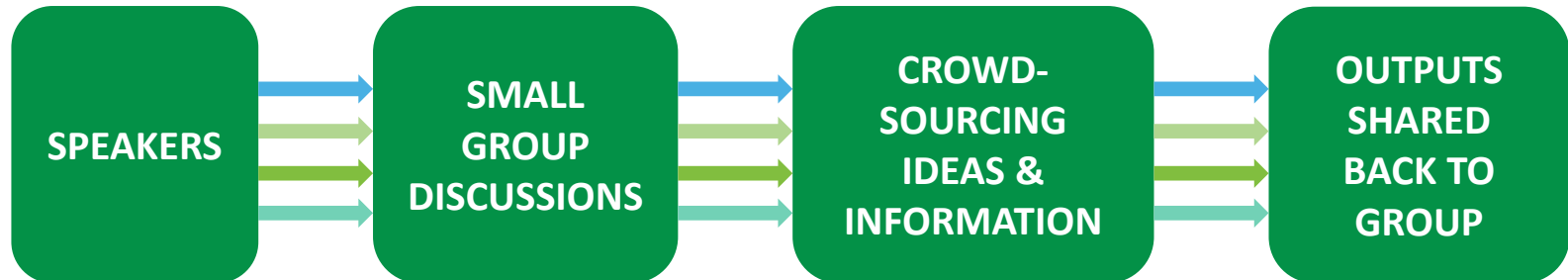
**Network** with thought leaders from research, universities, nonprofits, and industry.

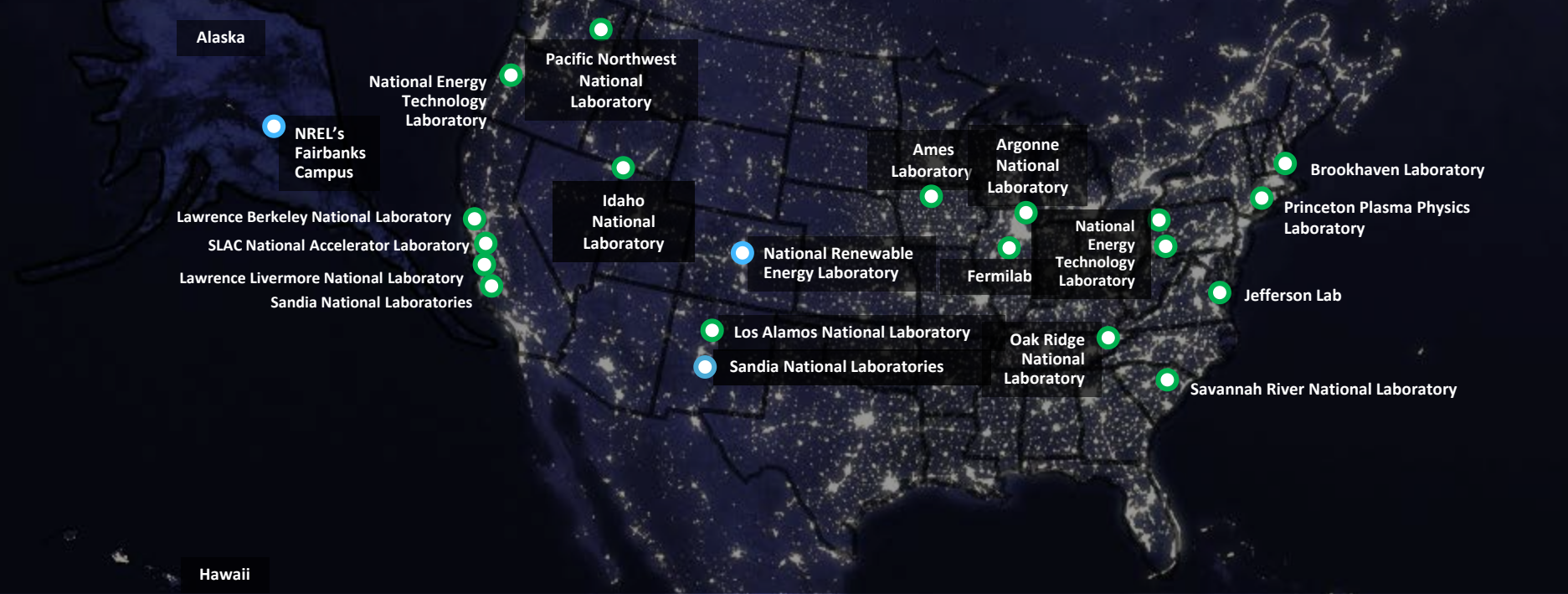


**Engage** with presentations on the latest high-impact research.



**Expand** partnerships in research projects and clean energy innovation opportunities.





# U.S. Department of Energy National Laboratories



# Staying Ahead of Future Energy Challenges

Through innovative, collaborative methodologies, the **Joint Institute for Strategic Energy Analysis (JISEA)** integrates diverse voices from research, universities, nonprofits, and industry to identify, frame, and build expertise around emerging, complex energy system challenges.



# Informing Emerging Challenges for Clean Energy Future

## Gather Diverse Perspectives and Expertise From:



Non-governmental organizations, trade, government, industry groups



Educational Institutions



Research leadership, internal funds and , project-based networks



Prize network, competitors, winners

## Develop Stakeholder-Informed Research Needs

Catalyzers: Pilot Explorations

Network development

White papers/Journal articles

Prizes

Workshops and relationships developing funders for critical challenges

Supporting expert and community connections in field

Vouchers and commercialization efforts

## Complex Scoping and Analysis Informing Scalable Programs

**BENCHMARKS OF GLOBAL CLEAN ENERGY MANUFACTURING, 2014-2016**

**CEMAC** Clean Energy Manufacturing Analysis Center  
Operated by the Joint Institute for Strategic Energy Analysis

**Renewable Energy Focus**  
Volume 4, June 2015, Page 114

**Intersections of disadvantaged communities and renewable energy potential: Data set and analysis to inform equitable investment prioritization in the United States**

**JISEA Energy and Atmospheric Systems Catalyzer**

**LA100**  
The Los Angeles 100% Renewable Energy Study

**Energy Systems**

**Air Quality**

**Climate**

**DOE OP Jobs**  
 Codedeveloped multi-industry granular data for workforce in post BIL/IRA economy



# Annual Meeting Brings Diverse Networks Together



The American-Made program is your fast track to the clean energy revolution. Funded by the U.S. Department of Energy, we incentivize innovation through prizes, training, teaming, and mentoring, connecting the nation's entrepreneurs and innovators to America's national labs and the private sector.

Fast track your ideas for the clean energy revolution



**\$200M**  
in cash prizes  
and support



**60+**  
prizes



**450+**  
Network  
members



# Impacts of the Approach

[JISEA] gives us permission and a **charge to collaborate across the lab!** The notes you provide after calls & the external board helps formalize it **so we can all be part of it!**  
—NREL MTES Group Manager



**Significant contributions to R&D efforts in the offshore wind, atmospheric science, aerodynamics, and controls areas, as well as the materials, manufacturing, and design innovation.**  
NREL was instrumental in execution of the floating platform prize. —EERE WETO (PEMP)



Excellent job administrating the Net Load Forecasting prize competition in collaboration with EPRI...[T]his prize has **demonstrated the relevance** of the SETO-funded Solar Forecast Arbiter platform and the broad interest in solar forecasting. —EERE SETO (PEMP)

The ability to **impact entire portfolios and sectors of companies quickly** through targeted outreach and support remains a unique opportunity to bring rapid change and disruption to industry innovations, often before corporations and investors are ready and willing. American-Made is a critical bridge to unlocking much larger support for U.S.-based climate startups at scale.” —Partner at a venture group








# Research Focus

JISEA focuses on the clean energy implications of emerging trends in climate, technology, and society.

JISEA recognizes the criticality of scaling up early efforts to address these challenges before they evolve into major threats to the energy system transformation.

 [jisea.org/our-work](https://jisea.org/our-work)



## Climate Adaptation and Clean Energy

The effects of climate change on the efficiency, security, and resilience of the energy system.



## Hard-to-Decarbonize Industries

Strategically building toward clean energy solutions in the agriculture and industrial sectors



## Technology/Society Interface

The societal implications of the advancement of clean energy technology.



## Workforce for the Future

The scale and scope of future clean energy workforce needs.



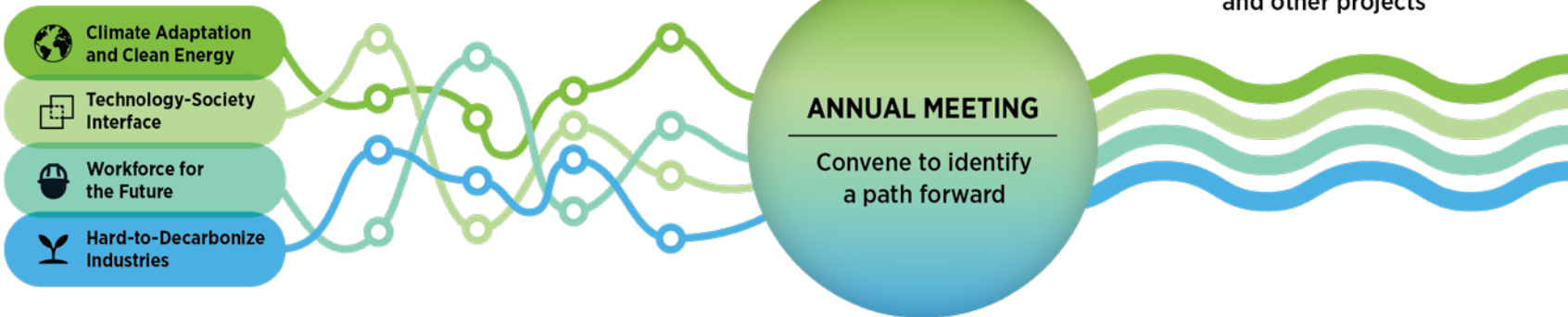
# Annual Meeting Brings Diverse Networks Together

## CONVENING (FALL/WINTER)

Explore and define research areas

## NETWORK COLLABORATIONS (SUMMER/FALL)

Participate in network research activities, catalyzing seed research, and other projects



Join our mailing list: <http://eepurl.com/c9Y1eH>



# Annual Meeting Brings Diverse Networks Together

## CONVENING (FALL/WINTER)

Explore and define research areas



## ANNUAL MEETING

Convene to identify a path forward

## NETWORK COLLABORATIONS (SUMMER/FALL)

Participate in network research activities, catalyzing seed research, and other projects



Join our mailing list: <http://eepurl.com/c9Y1eH>



# Meeting Goals and Elements

Identify, frame, and build expertise around emerging, complex energy system challenges



**Collaborate** in discussion panels on emerging clean energy questions.



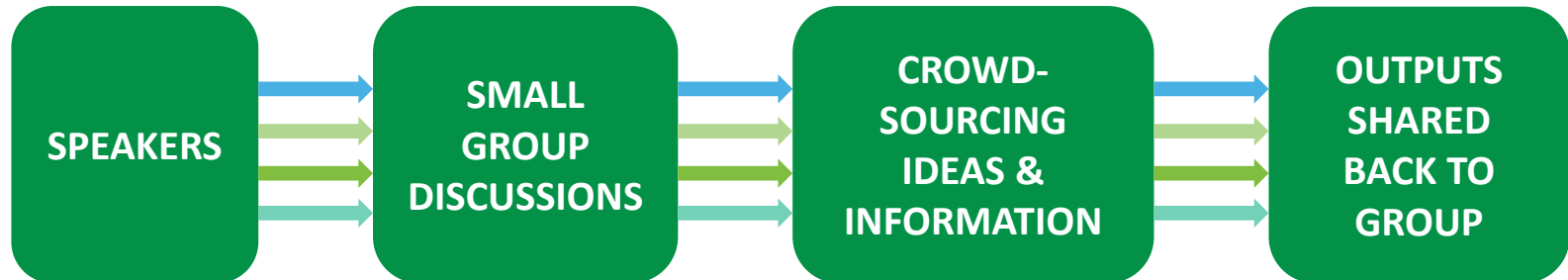
**Network** with thought leaders from research, universities, nonprofits, and industry.



**Engage** with presentations on the latest high-impact research.



**Expand** partnerships in research projects and clean energy innovation opportunities.





# Agenda and Plan

## Monday, February 26, 2024

9–9:30 a.m.	Registration and Networking Breakfast (provided)
9:30–10:15 a.m.	Welcome and Context Setting Session
10:15 a.m.–1:15 p.m.	Session 1: Hard-to-Decarbonize Industries
1:15–2:15 p.m.	Networking Lunch and Email Break (provided)
2:15–5:15 p.m.	Session 2: Technology-Society Interface
5:15–5:30 p.m.	Closing Remarks and Plan for Day 2
6–9 p.m.	Off-Site Reception Buffalo Rose Event Center (The Rose) 1119 Washington Ave, Golden, CO 8040

## Tuesday, February 27, 2024

8–8:30 a.m.	Networking Breakfast (provided)
8:30–8:40 a.m.	Welcome and Day 2 Overview
8:40–9 a.m.	Opening Remarks from NREL Director Martin Keller
9–11:50 a.m.	Session 3: Climate Adaptation and Clean Energy
11:50 a.m.–1:25 p.m.	12:10–1:20 p.m.—Fireside Chat with: Shalaya Morissette, Chief of the Minority Business and Workforce Division, DOE Office of Energy Justice and Equity Bill Ritter, Director, CSU Center for the New Energy Economy Dan Reicher, Senior Research Scholar, Stanford University
Lunch (provided)	
1:25–4:20 p.m.	Session 4: Workforce of the Future
4:20–4:45 p.m.	Common Themes Topics: Meta-Disciplinary Session
4:45–5 p.m.	Closing Remarks



# Agenda and Plan

## Monday, February 26, 2024

9–9:30 a.m.	Registration and Networking Breakfast (provided)
9:30–10:15 a.m.	Welcome and Context Setting Session
10:15 a.m.–1:15 p.m.	Session 1: Hard-to-Decarbonize Industries
1:15–2:15 p.m.	Networking Lunch and Email Break (provided)
2:15–5:15 p.m.	Session 2: Technology-Society Interface
5:15–5:30 p.m.	Closing Remarks and Plan for Day 2
6–9 p.m.	Off-Site Reception Buffalo Rose Event Center (The Rose) 1119 Washington Ave, Golden, CO 8040

Safety: Active Laboratory  
You first: Self care  
Food and Drink  
Offerings Wall  
Carpool Wall

## Tuesday, February 27, 2024

8–8:30 a.m.	Networking Breakfast (provided)
8:30–8:40 a.m.	Welcome and Day 2 Overview
8:40–9 a.m.	Opening Remarks from NREL Director Martin Keller
9–11:50 a.m.	Session 3: Climate Adaptation and Clean Energy
11:50 a.m.–1:25 p.m.	12:10–1:20 p.m.—Fireside Chat with: Shalaya Morissette, Chief of the Minority Business and Workforce Division, DOE Office of Energy Justice and Equity Bill Ritter, Director, CSU Center for the New Energy Economy Dan Reicher, Senior Research Scholar, Stanford University
Lunch (provided)	
1:25–4:20 p.m.	Session 4: Workforce of the Future
4:20–4:45 p.m.	Common Themes Topics: Meta-Disciplinary Session
4:45–5 p.m.	Closing Remarks



## JAM24 Ground Rules

Share the air

 0  0



Assume good intent

 0  0



Respectful discourse

 0  0



Step into the hallway for calls

 0  0





# Meet Your Neighbor







# JAM24 Programming Committee



**Lynn Abramson**  
Clean Energy Business Network



**Mary Brown**  
Wells Fargo Foundation



**Kristin Gray**  
NREL Foundation



**Rebecca Isacowitz**  
DOE Office of Energy  
Efficiency and Renewable  
Energy



**Hilary Klein**  
CSU Energy Institute



**Talia Martin**  
Grid Alternatives



**Shalaya Morissette**  
DOE Office of Energy  
Justice and Equity



# JAM24 Session Leads

## HARD-TO-DECARBONIZE



**Jared Temanson**  
JISEA/NREL



**Hilary Klein**  
CSU Energy Institute

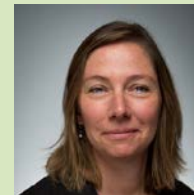
## CLIMATE ADAPTATION AND CLEAN ENERGY



**Talia Martin**  
Grid Alternatives

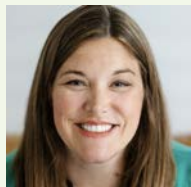


**Elizabeth Doris**  
JISEA/NREL



**Eliza Hotchkiss**  
NREL

## TECHNOLOGY-SOCIETY INTERFACE



**Kristin Wegner Guilfoyle**  
JISEA/NREL

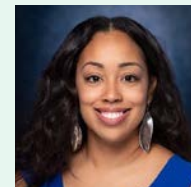


**Lynn Abramson**  
Clean Energy Business  
Network

## WORKFORCE OF THE FUTURE



**Debbie Brodt-Giles**  
JISEA/NREL



**Shalaya Morissette**  
DOE Office of Energy  
Justice and Equity



# The Meeting Doesn't Organize Itself



**Denise Barber**  
Network Organizer  
Aka 'JISEA.Coordinator@nrel.gov'  
JISEA/NREL



**Azine Askarinya**  
Project Controller  
JISEA/NREL



**Pamela Vela**  
Business Support  
JISEA/NREL



**Daniella Frank**  
Strategic Communications  
JISEA/NREL



# Thank you!

We invite you to the virtual JAM24 synthesis meeting on April 8, 2024, 11:30 a.m.–1 p.m. MT.

Join us via Microsoft Teams by visiting  
[bit.ly/JAM24-synthesis](https://bit.ly/JAM24-synthesis)

---

NREL/PR-6A50-89110

[www.jisea.org](http://www.jisea.org)

This work was authored in part by the National Renewable Energy Laboratory, operated by the Alliance for Sustainable Energy, LLC, for the U.S. Department of Energy (DOE) under Contract No. DE-AC36-08GO28308. Funding provided by the Joint Institute for Strategic Energy Analysis. The views expressed herein do not necessarily represent the views of the DOE, the U.S. Government, or sponsors.



Office of  
Research



Stanford  
University

