



# FAST Simulation of Wind Turbine Seismic Response

*Conference Paper*

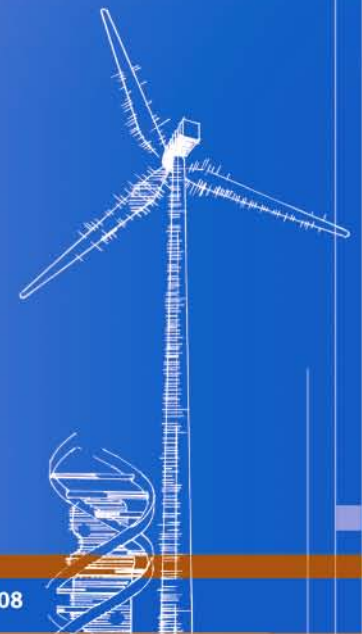
NREL/CP-500-46225

March 2010

I. Prowell and A. Elgamal  
*University of California – San Diego*

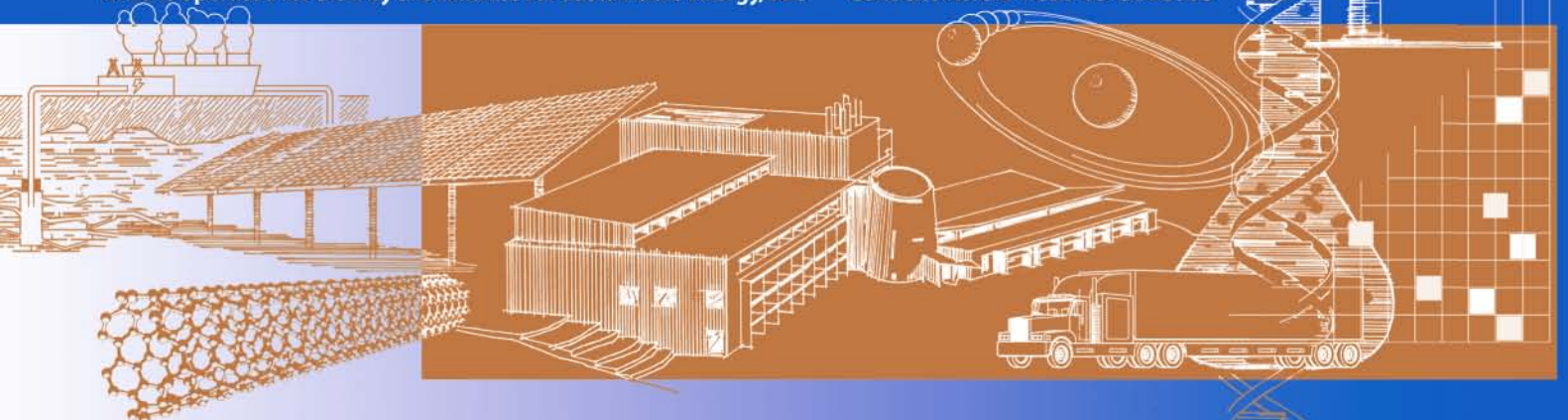
J. Jonkman  
*National Renewable Energy Laboratory*

*Presented at the 2009 Asian-Pacific Network of Centers for  
Earthquake Engineering Research (ANCER) Workshop  
Urbana-Champaign, Illinois  
August 13–14, 2009*



NREL is operated for DOE by the Alliance for Sustainable Energy, LLC

Contract No. DE-AC36-08-GO28308



## NOTICE

The submitted manuscript has been offered by an employee of the Alliance for Sustainable Energy, LLC (ASE), a contractor of the US Government under Contract No. DE-AC36-08-GO28308. Accordingly, the US Government and ASE retain a nonexclusive royalty-free license to publish or reproduce the published form of this contribution, or allow others to do so, for US Government purposes.

This report was prepared as an account of work sponsored by an agency of the United States government. Neither the United States government nor any agency thereof, nor any of their employees, makes any warranty, express or implied, or assumes any legal liability or responsibility for the accuracy, completeness, or usefulness of any information, apparatus, product, or process disclosed, or represents that its use would not infringe privately owned rights. Reference herein to any specific commercial product, process, or service by trade name, trademark, manufacturer, or otherwise does not necessarily constitute or imply its endorsement, recommendation, or favoring by the United States government or any agency thereof. The views and opinions of authors expressed herein do not necessarily state or reflect those of the United States government or any agency thereof.

Available electronically at <http://www.osti.gov/bridge>

Available for a processing fee to U.S. Department of Energy and its contractors, in paper, from:

U.S. Department of Energy  
Office of Scientific and Technical Information  
P.O. Box 62  
Oak Ridge, TN 37831-0062  
phone: 865.576.8401  
fax: 865.576.5728  
email: <mailto:reports@adonis.osti.gov>

Available for sale to the public, in paper, from:

U.S. Department of Commerce  
National Technical Information Service  
5285 Port Royal Road  
Springfield, VA 22161  
phone: 800.553.6847  
fax: 703.605.6900  
email: [orders@ntis.fedworld.gov](mailto:orders@ntis.fedworld.gov)  
online ordering: <http://www.ntis.gov/ordering.htm>



## **ABSTRACT**

Numerical modeling is an essential tool for predicting the seismic response of structures. Many mature computational tools, both commercial and public domain, are available for modeling stationary buildings and structures. Wind turbines are structures in motion, however, and as such are not easily modeled in these existing packages. FAST, an open source software tool maintained by the National Renewable Energy Laboratory (NREL), designed specifically to simulate turbine dynamics, overcomes this limitation. This paper discusses recent additions to FAST that allow a user to consider seismic loads in addition to existing robust capabilities for simulating wind and other load sources under the various states of wind turbine operation. For that purpose, researchers at the University of California San Diego (UCSD) first simulated seismic response for a small utility-scale wind turbine to a suite of earthquake motions using an experimentally validated OpenSees model. A comparable model built for FAST was subjected to the same earthquake recordings. Results from the two models validate this new capability in FAST.

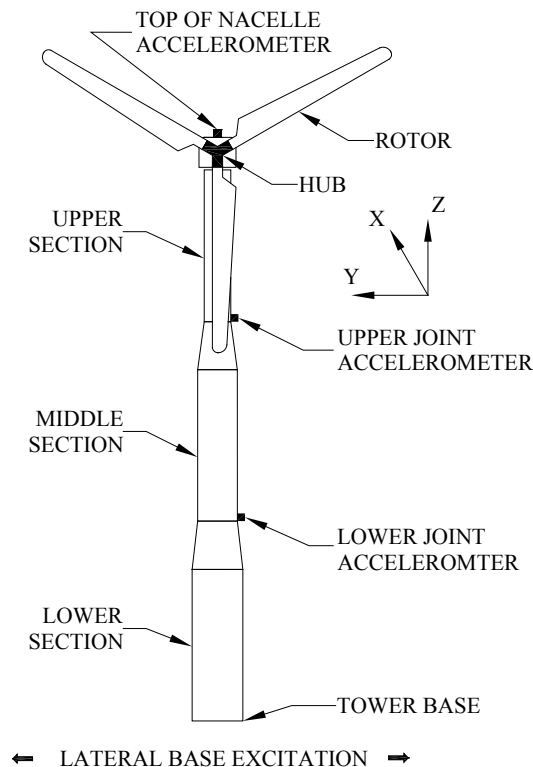
## **Acknowledgments**

The authors extend their gratitude to all the organizations, corporations, and individuals who contributed to this investigation, and who fund this research (National Science Foundation grant no. CMMI 0830422). Oak Creek Energy Systems (Hal Romanowitz and J. Edward Duggan) generously donated the 65-kW turbine for shake table testing and continues to assist in advancing this important area of research. The pilot phase of shake-table testing was conducted in collaboration with Professors José Restrepo and Marc Veletzos. In situ testing is progressing with the oversight of Dr. Robert Nigbor of the University of California Los Angeles. To facilitate this research, Dr. Paul Veers and the Sandia National Laboratories Wind Energy Technology Department gave summer internship support (Mr. Ian Prowell), guidance, and advice.

# Introduction

Wind energy production continues to grow rapidly—almost 20 GW of capacity was built worldwide in 2007, and total production rapidly approached 100 GW (Wiser and Bolinger 2008). More so than with past installations, recent growth is expanding into some regions of high seismic hazard. In response to this trend, regulating bodies recently added some seismic requirements for certifying wind turbines (Germanischer Lloyd 2003; IEC 2005).

These updated certification guidelines led to an increased interest in considering related seismic loading. Early investigations (Bazeos et al. 2002; Lavassas et al. 2003) focused on tower loading using models that lump the nacelle and rotor as a point mass (Figure 1). Gradually, interest shifted from these simple models to more refined models that also consider loads for turbine components other than the tower (Ritschel et al. 2003; Witcher 2005; Haenler et al. 2006; Zhao and Maisser 2006). Migration to models that include dynamics of the rotor (Figure 1) is also dictated by industry standard load cases such as an emergency shutdown triggered by an earthquake (IEC 2005). In addition to modeling techniques, researchers investigated effects such as soil structure interaction through equivalent springs and dampers (Bazeos et al. 2002; Zhao and Maisser 2006). Each of these publications approaches modeling seismic loads for wind turbines differently, and with the exception of Witcher (2005), none offers a publicly available tool for analyzing wind turbines.



**Figure 1. Wind turbine configuration and location of accelerometers**

This paper details updates to the FAST (Jonkman and Buhl 2005) code, an open-source piece of software capable of modeling turbine dynamics that allow users to consider base excitation; it

also discusses existing capabilities. A finite element code, OpenSees, was used to benchmark results obtained with the updated version of FAST. We compared simulations of an idling turbine subjected to base shaking from FAST to OpenSees simulations using an experimentally validated turbine model (Prowell et al. 2008).

## Description of FAST

The FAST code is a package that models two- and three-bladed horizontal-axis wind turbines (HAWTs) under various conditions to predict extreme and fatigue loads (Jonkman and Buhl 2005). For aerodynamic calculations, FAST employs the subroutines for HAWTs in the AeroDyn Code (Laino and Hansen 2001). The FAST code uses a combined modal and multibody dynamics formulation to simulate a turbine's dynamic behavior in the time domain. The code solves the equations of motion using standard multibody dynamics formulations with elements whose flexibility is determined by summing user-defined mode shapes. Wind turbine designers and researchers throughout the world use the FAST code. Germanischer Lloyd Wind Energie evaluated the code and found it suitable for calculating onshore wind turbine loads for design and certification.

Of particular interest to this work are recent updates to FAST that allow modeling of an offshore turbine on a movable platform (Jonkman 2007). These updates are a mechanism to supply a force and moment to be applied at the tower base platform with six degrees of freedom at each time step for a time marching simulation. In earthquake engineering, a base acceleration time history is responsible for the resulting structural loads. The model configuration may prescribe acceleration time histories for each of the three translational axes (Figure 1). Using an artificially large mass for the platform, approximately 5,000 times the mass of the turbine, the force required to achieve the desired acceleration can be calculated by  $F = ma$ , where  $F$  is the required force,  $m$  is the total system mass (turbine and artificial platform mass), and  $a$  is the desired acceleration. This simple approach produces a faithful reproduction of the desired acceleration history, but implicitly assumes that the foundation and soil surrounding the turbine, modeled by the large artificial platform mass, act as a rigid block without rocking. This assumption is frequently used in earthquake engineering, but specific locations should be evaluated to ensure validity. In conjunction with the prescribed acceleration time history, all other loading mechanisms in the FAST code are still available. This allows time domain simulation of simultaneous earthquake and wind loads as well as the required simulation of an earthquake-induced emergency shutdown (IEC 2005). Conducting this calculation in the time domain allows a researcher to directly consider nonlinear effects such as structural nonlinearities, aerodynamic hysteresis, control system influence, and transients—all of which are important to wind turbine response.

## Turbine Model

The models described here are based on a 65-kW Nordtank (Figure 2) wind turbine manufactured in Denmark. Many of these and similar turbines were installed during the 1980s in California. They are characterized by high reliability and simple operation in comparison to other turbines of a similar vintage (Hau 2006). These turbines are still in use in some areas, and many retired units have been reconditioned for sale on the second-hand market.



**Figure 2. 65-kW Nordtank shake table test**

A 65-kW turbine is near the lowest power rating used in 1980s-era utility-scale wind farms. Though no longer desirable for utility-scale applications, this size unit is still appropriate for distributed power applications. In comparison to modern megawatt-scale turbines, this unit is small, but it represents the most common turbine configuration, a thin-walled tubular steel tower topped with a nacelle that yaws to orient the rotor into the wind. Table 1 summarizes the turbine's engineering properties.



**Table 1. Wind Turbine Properties**

Property	Value
Rated power	65 kW
Speed regulation	Passive stall
Operational RPM range	45–55 rpm
Rated wind speed	33.8 km/h
Rotor diameter	16.0 m
Tower height	22 m
Lower section length	7.9 m
Lower section diameter	2.0 m
Middle section length	7.9 m
Middle section diameter	1.6 m
Top section length	6.0 m
Top section diameter	1.1 m
Tower wall thickness	5.314 mm
Rotor hub height	22.6 m
Tower mass	6400 kg
Nacelle mass	2400 kg
Rotor mass (with hub)	1900 kg

## OpenSees Model

UCSD researchers developed a finite element (FE) model for OpenSees (Mazzoni et al. 2006) based on the engineering properties of the turbine (Table 1) to facilitate dynamic simulation of the turbine while idling. They divided the tower (Figure 1) into 30 beam-column elements with a flexural stiffness based on the cross section at the center of each element. Each blade was modeled using 12 beam-column elements to represent the mass and stiffness of the rotor (Figure 1). The nacelle was modeled with rigid elements to connect the top of the tower to the rotor. An added hinge condition allowed the free rotation of the rotor.

For an idling condition at zero rotational speed, the FE model predicted the first longitudinal (Figure 3a) and lateral (Figure 3b) bending modes at 1.7 Hz. It predicted the second bending modes at 10.5 Hz in the longitudinal direction and 10.9 Hz in the lateral direction. Full-scale shake table tests of an idling 65-kW Nordtank turbine validated this model configuration, which produces good agreement for the predicted and observed mode shapes and frequencies (Prowell et al. 2008). Based on the test results and industry guidelines (IEC 2005), structural damping was set to 1% for the first mode. Specified in the form of Rayleigh damping, a value of 3.5% used at 12 Hz better matched the recorded results.

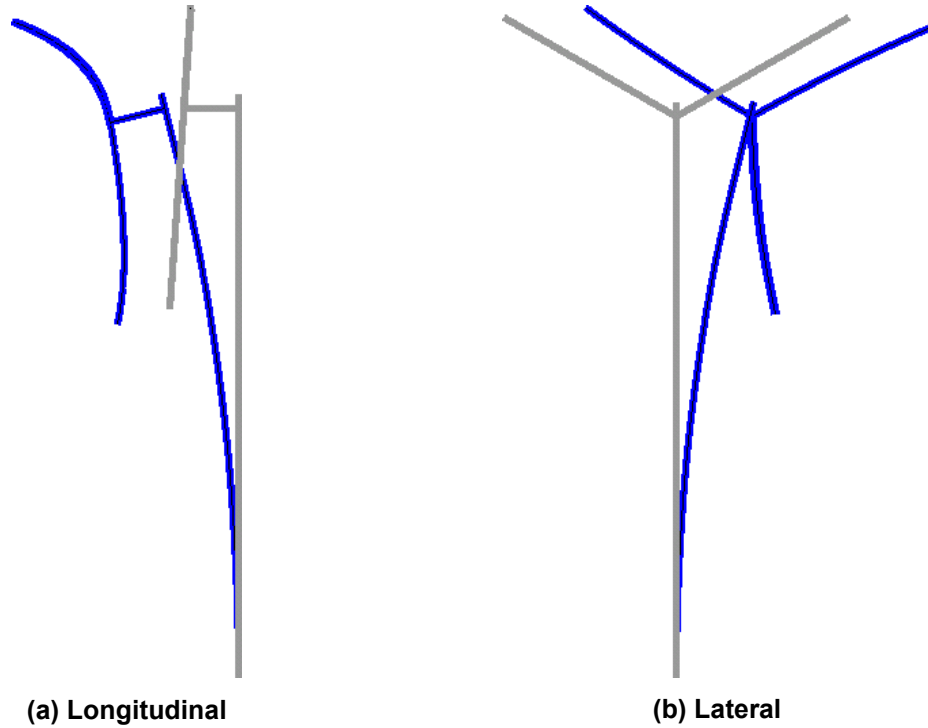


Figure 3. OpenSees model first bending modes (1.7 Hz)

## FAST Model

As described earlier, the FAST code employs a combined multibody and modal dynamics formulation. A FAST model has five flexible bodies: tower, three blades, and drive shaft. As in the OpenSees model, the nacelle (Figure 1) is a rigid body. The mass and stiffness distribution derived for the FAST model matched that used in the OpenSees model as closely as possible. The FAST code relies on external calculation of mode shapes and requires that mode shapes be described by a five-coefficient polynomial of the form  $\varphi(x) = a_2x^2 + a_3x^3 + a_4x^4 + a_5x^5 + a_6x^6$ . The coefficients must sum to a value of 1. Because the tower is assumed to have a cantilevered base, the code neglects the constant and linear coefficients. We calculated the coefficients used for the model described here by selecting polynomial coefficients that best approximated the first longitudinal and lateral modes (Figure 3) as well as the second longitudinal and lateral modes developed from the OpenSees model. The resulting FAST model predicted the first longitudinal and lateral bending modes at 1.7 Hz for the wind turbine idling at zero rotational speed. The predicted frequencies for the second bending modes are 10.4 Hz for the longitudinal mode and 10.9 Hz for the lateral mode. Table 2 summarizes the predicted tower bending natural frequencies for both models.

Table 2. Predicted Tower Bending Frequencies of Idling Turbine

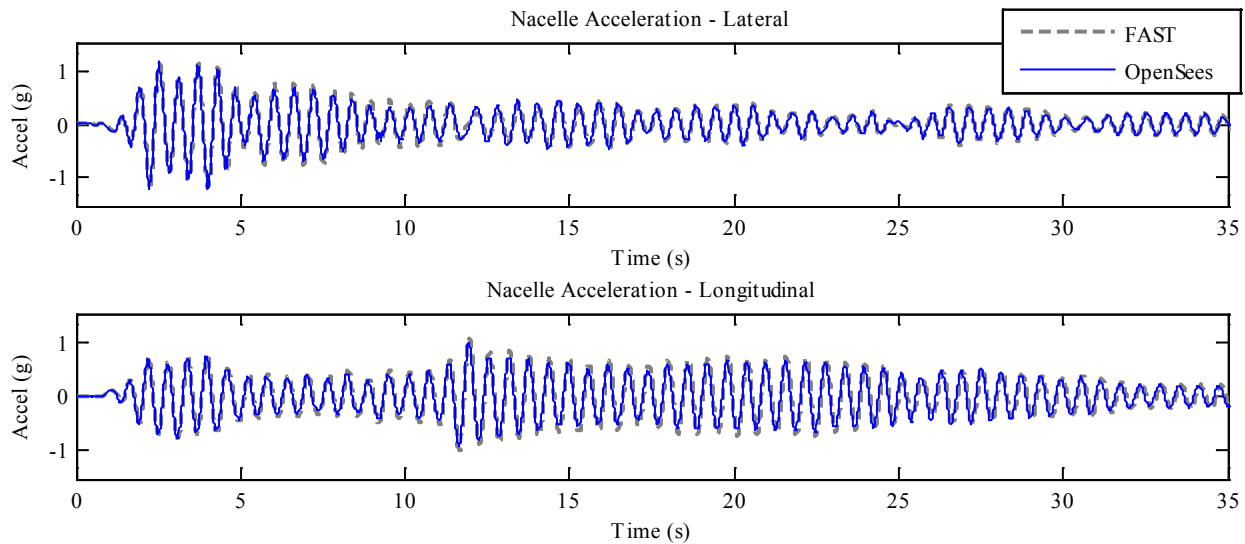
Model	First Bending		Second Bending	
	Longitudinal	Lateral	Longitudinal	Lateral
OpenSees	1.7	1.7	10.5	10.9
FAST	1.7	1.7	10.4	10.9

## Numerical Modeling of Seismic Response While Idling

We used the two turbine models to conduct base shaking simulations for three earthquakes recorded in California (Table 3). Because OpenSees cannot predict aerodynamics and other operational loads for a turbine, to accommodate direct comparison, both models have the wind turbine idling at zero rotational speed without aerodynamics during the simulations. Both horizontal components of the records simulated the turbine response for a fixed base condition. This assumption is suitable for the stiff soils found at many wind farms. Further consideration of soil structure interaction would be warranted for location with soft soils (Bazeos et al. 2002; Zhao and Maisser 2006). Figure 4 compares the calculated acceleration from OpenSees and FAST at the top of the nacelle for 1940 El Centro earthquake acceleration time history recorded at array station 9 in El Centro, California. The results for the other earthquake simulations also show the same high level of agreement observed for the El Centro earthquake simulation.

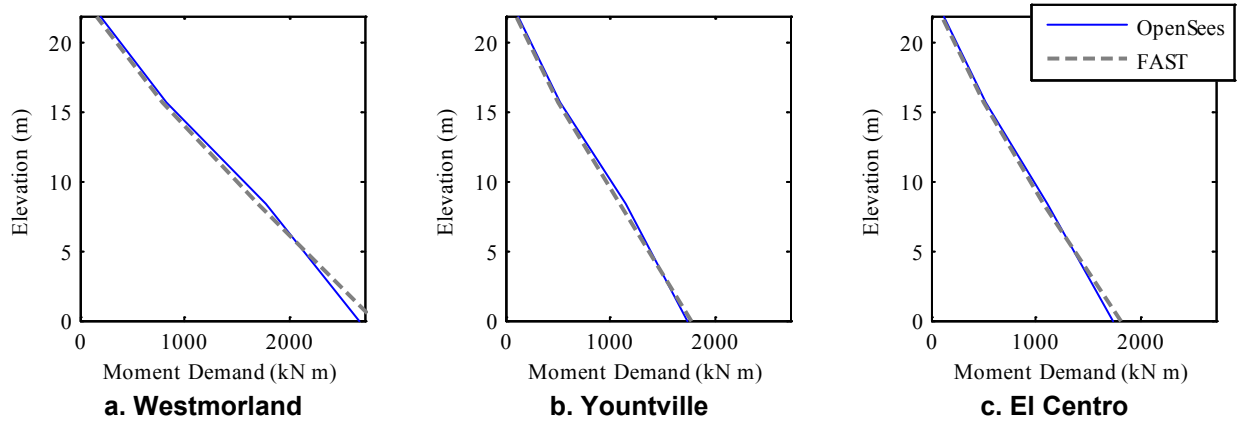
**Table 3. Earthquake Data**

Earthquake	Moment Magnitude	Station	PGA	Source Distance
1981 Westmorland	5.9 $M_w$	Fire Station	0.50 g	7.2 km
2000 Yountville	5.0 $M_w$	Fire Station No. 3	0.41 g	13.7 km
1940 El Centro	6.9 $M_w$	Array Station 9	0.35 g	12.2 km



**Figure 4. Comparison of nacelle acceleration for the 1940 El Centro earthquake**

To investigate the possible implications of the two models on design loads, we calculated the maximum moment demand at the base, the lower joint, the upper joint, and the top of the tower (Figure 1). This maximum was taken from the square root of the sum of the squares (SRSS) of the horizontal tower moments at each time step. As with the acceleration time history, the moment demands calculated by the FAST and the OpenSees model showed good agreement (Figure 5).



**Figure 5. Moment demand in turbine tower**

## Conclusions

This paper presents recent modifications developed by UCSD researchers to the FAST code that consider seismic loads for designing wind turbines. To validate these modifications, we compared results to those from a calibrated FE turbine model developed using OpenSees (Prowell et al. 2008). Both the acceleration time history and the tower moment demand show good agreement for both computational approaches. This development makes the FAST code the first open-source tool specific to wind energy for simulating seismic loading of wind turbines. This will enable practitioners and researchers throughout the world to simulate scenarios where wind turbines are subjected to loads from wind, operational state, and base excitation simultaneously in the time domain.

This work is part of a continuing effort at UCSD to reduce uncertainty associated with seismic design loads for wind turbines. Through National Science Foundation funding, researchers are conducting full-scale experiments to inform and refine modeling of wind turbines for earthquake-induced loads. The modifications to FAST described here will be used to simulate and validate experimental results. Feedback from findings will be used to refine the capability of the FAST code to accurately incorporate base shaking as a load source for wind turbines.

## References

- Bazeos, N.; Hatzigeorgiou, G.D.; Hondros, I.D.; Karamaneas, H.; Karabalis, D.L.; Beskos, D.E.. "Static, Seismic and Stability Analyses of a Prototype Wind Turbine Steel Tower." *Eng. Struct.*; Vol. 24, 2002; 1015.
- Germanischer Lloyd. *Guideline for the Certification of Wind Turbines*. Hamburg, Germany: Germanischer Lloyd, 2003.
- Haenler, M.; Ritschel, U.; Warnke, I. "Systematic Modelling of Wind Turbine Dynamics and Earthquake Loads on Wind Turbines." *European Wind Energy Conference and Exhibition, European Wind Energy Association, Athens, Greece, 2006*; 1–6.
- Hau, E. *Wind Turbines*. Berlin, Germany: Springer, 2006.
- IEC. *IEC 61400-1 Ed.3: Wind Turbines. Part 1: Design Requirements*. Geneva, Switzerland: International Electrotechnical Commission, 2005.
- Jonkman, J.M. *Dynamics Modeling and Loads Analysis of an Offshore Floating Wind Turbine*. NREL/TP-500-41958. Golden, CO: National Renewable Energy Laboratory, 2007.
- Jonkman, J.M.; Buhl, M.L., Jr. *FAST User's Guide*. NREL/EL-500-38230. Golden, CO: National Renewable Energy Laboratory, 2005.
- Laino, D.J.; Hansen, A.C. *User's Guide to the Wind Turbine Dynamics Computer Software AeroDyn*. Salt Lake City, UT: Windward Engineering, LC, 2001.
- Lavassas, I.; Nikolaidis, G.; Zervas, P.; Efthimiou, E.; Doudoumis, I.N.; Baniotopoulos, C.C. "Analysis and Design of the Prototype of a Steel 1-MW Wind Turbine Tower." *Eng. Struct.*; Vol. 25(8), 2003; 1097–1106.
- Mazzoni, S.; McKenna, F.; Fenves, G.L. *Open System for Earthquake Engineering Simulation User Manual*. Berkeley, CA: Pacific Earthquake Engineering Research Center, University of California, 2006.
- Prowell, I.; Elgamal, A.; Veletsos, M.; Restrepo, J. "Shake Table Test of a 65 kW Wind Turbine and Computational Simulation." *Proceedings of the 14th World Conference on Earthquake Engineering, Beijing, China, 2008*.
- Ritschel, U.; Warnke, I.; Kirchner, J.; Meussen, B. "Wind Turbines and Earthquakes." *Second World Wind Energy Conference, World Wind Energy Association, Cape Town, South Africa, 2003*.
- Wiser, R.; Bolinger, M. *Annual Report on U.S. Wind Power Installation, Costs, and Performance Trends: 2007*. DOE/GO-102008-2590 Washington, DC: U.S. Department of Energy, 2008.
- Witcher, D. "Seismic Analysis of Wind Turbines in the Time Domain." *Wind Energy*; Vol. 8, 2005; p. 81.
- Zhao, X.; Maisser, P. "Seismic Response Analysis of Wind Turbine Towers Including Soil-Structure Interaction." *Proceedings of the Institution of Mechanical Engineers, Part K: J. Multi-Body Dynamics*; Vol. 220, 2006; p. 53.

# REPORT DOCUMENTATION PAGE

Form Approved  
OMB No. 0704-0188

The public reporting burden for this collection of information is estimated to average 1 hour per response, including the time for reviewing instructions, searching existing data sources, gathering and maintaining the data needed, and completing and reviewing the collection of information. Send comments regarding this burden estimate or any other aspect of this collection of information, including suggestions for reducing the burden, to Department of Defense, Executive Services and Communications Directorate (0704-0188). Respondents should be aware that notwithstanding any other provision of law, no person shall be subject to any penalty for failing to comply with a collection of information if it does not display a currently valid OMB control number.

**PLEASE DO NOT RETURN YOUR FORM TO THE ABOVE ORGANIZATION.**

<b>1. REPORT DATE (DD-MM-YYYY)</b> March 2010		<b>2. REPORT TYPE</b> Conference paper		<b>3. DATES COVERED (From - To)</b> August 13 - 14, 2009	
<b>4. TITLE AND SUBTITLE</b> FAST Simulation of Wind Turbine Seismic Response				<b>5a. CONTRACT NUMBER</b> DE-AC36-08-GO28308	
				<b>5b. GRANT NUMBER</b>	
				<b>5c. PROGRAM ELEMENT NUMBER</b>	
<b>6. AUTHOR(S)</b> I. Prowell, A. Elgamal, and J. Jonkman				<b>5d. PROJECT NUMBER</b> NREL/CP-500-46225	
				<b>5e. TASK NUMBER</b> WER9-3530	
				<b>5f. WORK UNIT NUMBER</b>	
<b>7. PERFORMING ORGANIZATION NAME(S) AND ADDRESS(ES)</b> National Renewable Energy Laboratory 1617 Cole Blvd. Golden, CO 80401-3393				<b>8. PERFORMING ORGANIZATION REPORT NUMBER</b> NREL/CP-500-46225	
<b>9. SPONSORING/MONITORING AGENCY NAME(S) AND ADDRESS(ES)</b>				<b>10. SPONSOR/MONITOR'S ACRONYM(S)</b> NREL	
				<b>11. SPONSORING/MONITORING AGENCY REPORT NUMBER</b>	
<b>12. DISTRIBUTION AVAILABILITY STATEMENT</b> National Technical Information Service U.S. Department of Commerce 5285 Port Royal Road Springfield, VA 22161					
<b>13. SUPPLEMENTARY NOTES</b>					
<b>14. ABSTRACT (Maximum 200 Words)</b> This paper discusses recent additions to the computer simulation code FAST that allow a user to consider seismic loads in addition to existing robust capabilities for simulating wind and other load sources under the various states of wind turbine operation.					
<b>15. SUBJECT TERMS</b> wind turbine design codes; wind turbine simulation					
<b>16. SECURITY CLASSIFICATION OF:</b>			<b>17. LIMITATION OF ABSTRACT</b> UL	<b>18. NUMBER OF PAGES</b>	<b>19a. NAME OF RESPONSIBLE PERSON</b>
<b>a. REPORT</b> Unclassified	<b>b. ABSTRACT</b> Unclassified	<b>c. THIS PAGE</b> Unclassified			<b>19b. TELEPHONE NUMBER (Include area code)</b>

Standard Form 298 (Rev. 8/98)  
Prescribed by ANSI Std. Z39.18