

Distributed Wind Aeroelastic Modeling (dWAM)

Brent Summerville, NREL

Tuesday, Feb. 28, 2023

Distributed Wind 2023 National
Laboratory–Industry Discussion Session

dWAM Team



Brent Summerville,
PI



Jason Jonkman



Emmanuel
Branlard



Abhineet Gupta



Pietro Bortolotti



Derek Slaughter



Hannah Ross



Andy Platt



Jeroen van Dam



Scott Wilde



Scott Dana



Kevin Moore, PI



Brandon Ennis

Subcontractors



Rick Damiani
RRD
Engineering



Dean Davis
Windward
Engineering



Robert Preus
Advanced
Renewable
Technology



David Wood
University of Calgary

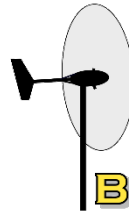


Mohamed Hamam
Port Said University



David Verelst
Danish Technical
University

Distributed Wind Energy OEM Partners



BERGEY
WINDPOWER



dWAM Overview

Aeroelastic modeling is the primary method for the structural and performance assessment of any wind turbine. Despite the advantages afforded by aeroelastic modeling tools, their use in the distributed wind energy industry is limited.

- Started from NREL [Aeroelastic Modeling for Distributed Wind Turbines](#) project with Damiani and Davis (2022) researching current needs, including input from an industry workshop.
- **NREL** with partner lab, **Sandia National Laboratories**, to address top needs.
- **Outcome:** Advancements in dWAM will accelerate the design and certification process for developing optimized and reliable distributed wind turbines.

Budget

NREL	\$1,270,000
Sandia	\$ 280,000
<i>Total over 2 years</i>	<i>\$1,550,000</i>

Period of Performance

2 years (NREL Fiscal Years 2023 and 2024)

*Image from Woodward
Engineering*

Approach and Outcome

Distributed wind = small, medium and **large** turbines.

- Modeling for the large turbine archetype is well-tuned in OpenFAST.
- dWAM will focus on the needs of small and medium wind turbine archetypes.

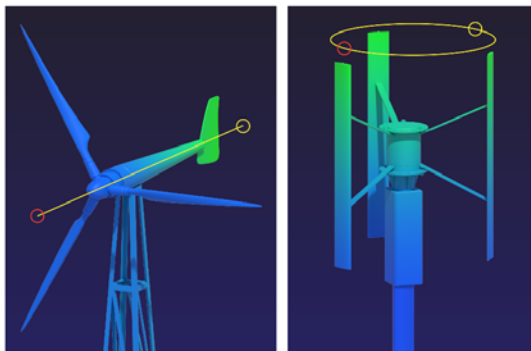
Top Distributed Wind Archetypes

- Three-bladed, upwind with active pitch and active yaw
- Three-bladed, upwind with stall control and active yaw
- Three-bladed, upwind with stall control and passive tail
- Three-bladed, downwind with stall control and passive yaw

Example

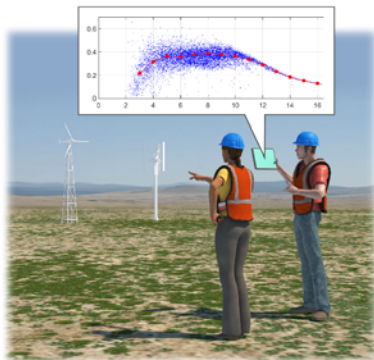
- Utility scale
- QED, NPS
- Bergey, Sonsight
- Eocycle M, Skystream

Model Improvements



- Improved Physics for Distributed Wind Archetypes
- Vertical-Axis Wind Turbine (VAWT) Modeling
- Automated Campbell Diagram Capabilities (ACDC)

Validated Reference Turbines



- Advanced Reference Turbines for Distributed HAWT Archetypes (ARETHA)
- Research Turbine Data for Model Validation
- Code Comparison for Verification

Improved User Experience



- Design Load Basis Guidance With Real-World Failure Mode Research
- Improved OpenFAST Documentation
- VAWT-Specific Scripts and Guidance
- ACDC Tools

Impacts Realized



- Optimized, Certified Designs
- Improved Reliability
- Lower Cost of Wind Energy

Validation

All collaborating OEMs have received WETO/NREL funding via the *Competitiveness Improvement Project (CIP)*.

(NREL CIP 2023)



NREL PIX 49511

A: passive-yaw, upwind, stall HAWT (Bergey Excel 15)



Photo by Eocycle

B: passive-yaw, downwind, stall HAWT (Eocycle M26)



Photo by QED

C: active-yaw, upwind, stall HAWT (QED PHX-20)



Pika T701

NREL is working to re-install Pika T701 at Flatirons Campus as a second turbine for tail vane modeling validation (Jeroen/Scott W. leading).



XFlow Energy

XFlow has installed a prototype 25-kW VAWT at Windward Engineering's test facility in Spanish Fork, Utah, for VAWT model validation.

Three modern distributed wind turbines coming to NREL's *Distributed Integrated Energy Laboratory (DIEL)* at Flatirons Campus under the *Flatirons Distributed Wind Turbine Installation* project will serve as the baseline for new reference turbines and for model validation.

Tail vane modeling

- Emmanuel Branlard, NREL, Lead
- Translating validated mathematical model from Wood/Hammam in OpenFAST implementation

Yaw friction modeling

- Rick Damiani, RRD Engineering, Lead
- Developing improved code for passive yaw archetypes

VAWT code development

- Kevin Moore, Sandia, Lead
- Hannah Ross, NREL, Lead; Andy Platt, NREL, leading coupling effort
- Positive collaboration between Sandia and NREL

ACDC code development

- Derek Slaughter, NREL, Lead
- Collaborating with Technical University of Denmark (DTU) and German Aerospace Center (DLR) including mode visualization

Creation of validated reference turbines

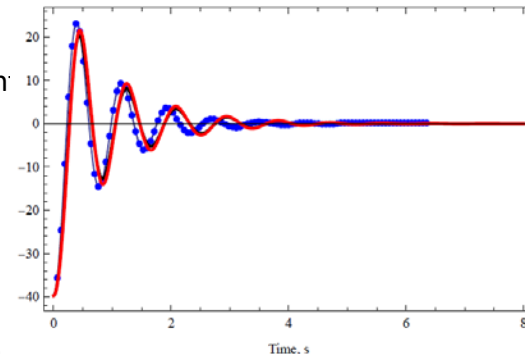
- Abhineet Gupta, NREL, Lead
- Starting with the Bergey Excel 15 OpenFAST model

Improvements in user experience

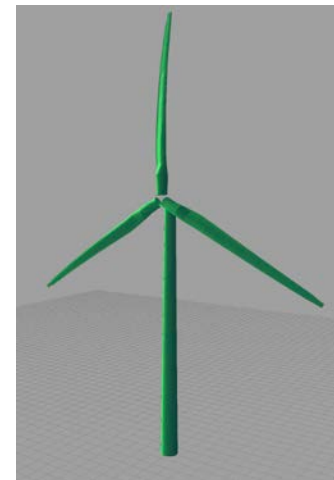
- Andy Platt, NREL, Lead, OpenFAST documentation
- Kevin Moore, Sandia, Lead, VAWT modeling documentation

Distributed wind turbine failure mode workshop

- Robert Preus, Advanced Renewable Technology, Lead
- Subcontract nearly executed
- Part of Design Load Basis guidance document



Delta fin yaw angle predictions using the full model (black line), reduced model (red line), and experimental results (blue dots). From D. Wood, M. Hammam.



Turbine visualization sample from ACDC effort. Image from Derek Slaughter, NREL

Questions?



Distributed Wind Aeroelastic Modeling (dWAM)

Introduction

Aeroelastic modeling is the primary method for the structural and performance assessment of any wind turbine. Such modeling provides an understanding of the impact of design parameters on turbine loading and power response before operating in the field. Despite these advantages, the use of aeroelastic modeling in the distributed wind energy industry is limited.

Objective

This project aims to improve the aeroelastic modeling tools for distributed wind turbines to enable the design and certification of optimized turbine technology with a competitive cost of energy.

Components of the Project

Advanced Reference Turbines for Distributed Horizontal-Axis Wind Turbine Archetypes (AMETHA)

- Focus on modern, horizontal-axis archetypes
- Improve OpenFAST code
- Validate technologies using research turbines at National Renewable Energy Laboratory's NREL/D Frazer's Campus
- Perform code-to-code verification activities
- Develop guidance documents and improved user manuals

Vertical Axis Wind Turbine (VAWT) Modeling

- Improve modeling code and user experience in collaboration with Sandia National Laboratories
- Couple OWIND code created by Sandia National Laboratories and NREL's OpenFAST/Ansys tools

Automated Campbell Diagram Capabilities (ACDC)

- Develop a streamlined, documented, and automated procedure to generate a Campbell diagram
- Aid in meeting requirement for certification to International Electrotechnical Commission 61400-2 standard

Design Load Basis Guidance

- Develop guidance on selecting critical vs. non-design-driving load cases and creating a design load basis for distributed wind turbine modeling
- Host an industry workshop to better understand real-world field failures of distributed wind turbines

Future Outcomes

Advancements in dWAM will result in impactful deployment acceleration and cost reduction of optimized, certified turbine designs. Designers will have access to guidance documents, validated model templates and load reports, and automated analysis software, allowing increased industry adoption of dWAM tools. These resources will accelerate the design and certification process for developing more optimized and reliable distributed wind turbines.

Partners

- Sandia National Laboratories
- Technical University of Denmark
- RRD Engineering
- Windward Engineering
- Advanced Renewable Technology
- Bergey Windpower Company
- QED Wind Power
- Encycle America Corporation
- Xflow Energy Company
- University of Calgary
- University of Massachusetts Amherst



Model Improvements

- Improve physics for distributed wind turbine archetypes
- Model VAWTs
- Improve advanced Campbell diagram capabilities

Validated Reference Turbines

- Develop Advanced Reference Turbine for Distributed (ART) Archetypes
- Research turbine data for model validation
- Compare codes for certification

Improved User Experience

- Develop Advanced Reference Turbine for Distributed (ART) Archetypes
- Research turbine data for model validation
- Develop ACDC tools

Realized Impacts

- Create optimized, certified designs
- Increase reliability
- Lower cost of wind energy

National Renewable Energy Laboratory
15013 Denver West Parkway, Golden, CO 80401
970-271-3000 • www.nrel.gov
NREL.gov | nrel.gov | nrel.gov | nrel.gov

NREL is a national laboratory of the U.S. Department of Energy
Office of Energy Efficiency and Renewable Energy
Operated by the Alliance for Sustainable Energy, LLC
NREL | P.O. Box 250 | Golden, CO 80401

dWAM fact sheet (NREL 2023)



Bergey Excel 15 in Blowing Rock, NC
Photo courtesy Nelson Aerial Productions and PNNL

Thank you

Brent.Summerville@nrel.gov

www.nrel.gov

NREL/PR-5000-85446

This work was authored by the National Renewable Energy Laboratory, operated by Alliance for Sustainable Energy, LLC, for the U.S. Department of Energy (DOE) under Contract No. DE-AC36-08GO28308. Funding provided by the U.S. Department of Energy Office of Energy Efficiency and Renewable Energy Wind Energy Technologies Office. The views expressed in the article do not necessarily represent the views of the DOE or the U.S. Government. The U.S. Government retains and the publisher, by accepting the article for publication, acknowledges that the U.S. Government retains a nonexclusive, paid-up, irrevocable, worldwide license to publish or reproduce the published form of this work, or allow others to do so, for U.S. Government purposes.



References

- Damiani, Rick, and Dean Davis. 2022. *Aeroelastic Modeling for Distributed Wind Turbines: March 11, 2021–November 10, 2021*. Golden, CO: National Renewable Energy Laboratory. NREL/SR-5000-81724. <https://www.nrel.gov/docs/fy22osti/81724.pdf>.
- NREL CIP. 2023. “Competitiveness Improvement Project.” Accessed Feb. 24, 2023. <https://www.nrel.gov/wind/competitiveness-improvement-project.html>.
- NREL. 2023. “Distributed Wind Aeroelastic Modeling (dWAM).” Golden, CO: National Renewable Energy Laboratory. NREL/FS-5000-85167. <https://www.nrel.gov/docs/fy23osti/85167.pdf>