



Make the Most of Online Weatherization Training Resources

Juliana Williams
National Home Performance Virtual
Conference
April 13, 2021

Juliana Williams

Energy Markets and Policy Specialist
National Renewable Energy Laboratory

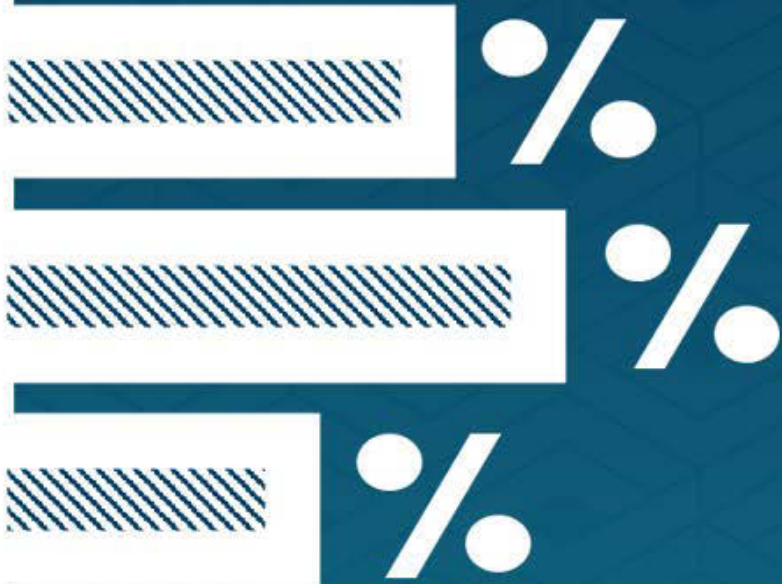


Objectives

At the conclusion of this session, participants will be able to:

- Locate appropriate federal online training resources available for the weatherization workforce
- Recognize the diverse job roles that can benefit from existing online training
- Engage with upcoming weatherization training resources.

POLL



What type of organization do you represent?

 Respond to the question in the pop-up window

Weatherization Administrative Trainings

- Weatherization Administrative trainings launched in Spring 2020 and are freely available at:

<https://wap.litmos.com>.



Who Benefits From Training?

Based on network feedback, the U.S. Department of Energy (DOE) charged NREL with developing online training for Weatherization Administrative Professionals.

Primary Audience:

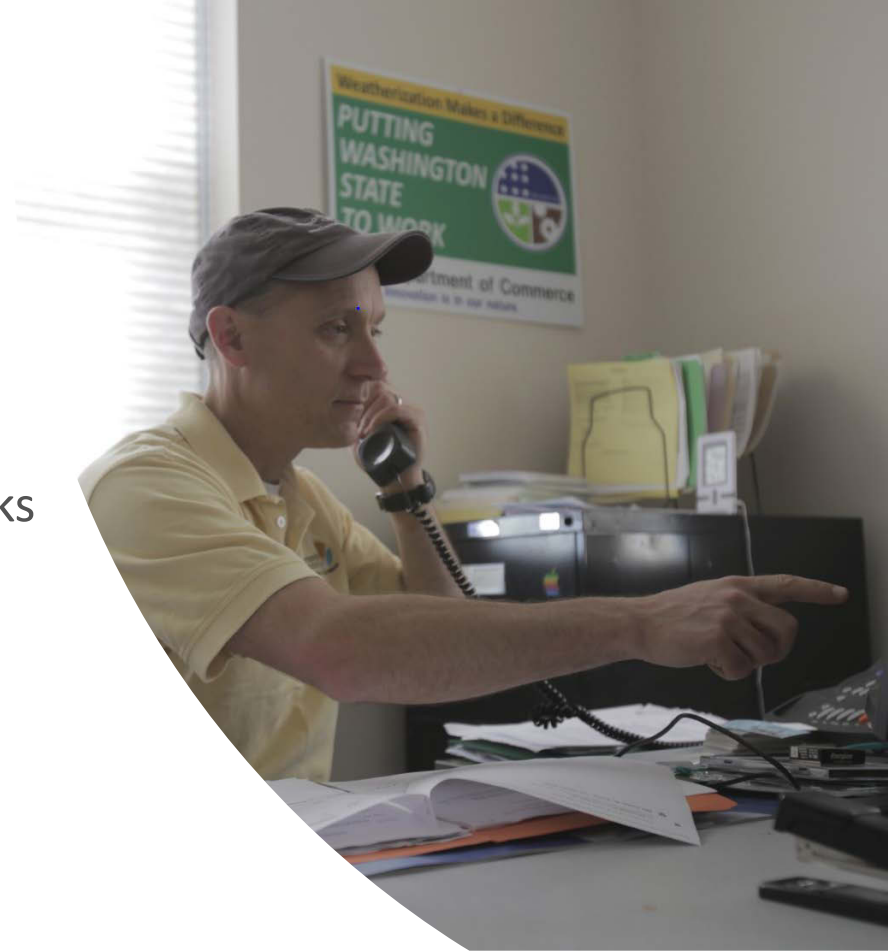
- Weatherization Program Director
- Fiscal Manager
- Quality Assurance Manager.

Secondary Audiences:

- Field crews
- Subcontractors
- Utility low-income efficiency staff
- Agency Directors/Grantees.

About the Courses

- Short, targeted learning courses (10-15 minutes long)
- Interactive activities to practice job tasks
- Courses can be repeated as often as desired
- Knowledge checks to track progress
- Extensive downloadable resources
- Downloadable completion certificate.



Course Content

- 29 Administrative trainings are grouped into the following learning paths:



Planning and Budgets



Fiscal Tasks



Procurement



Management



Client Relations



Quality Improvement



Economics of Weatherization



Multifamily Weatherization



Measure	Quantity	Bid A	Bid B	Bid D
Attic Insulation - Blown Cellulose, 2.5 lbs/ cu.ft	1,500			
Wall insulation - Blown Cellulose, 3.5 lbs/ cu.ft	1,200			
Floor insulation - Batt Fiberglass, R-30	1,500			
Total cost (Price includes all materials, labor, permit fees, sales taxes, and LSW practices with insulation.)				

Learning Pathway: Procurement

- Subcontractor or Employee?
- To Purchase, or Not to Purchase?
- Develop Scoring Criteria for Evaluating Proposals
- Draft and Issue a Solicitation
- And the Winner Is....Select a Subcontractor
- Crossing the Finish Line: Subcontracting.

And the Winner Is...Selecting a Subcontractor

By the end of this course, you should be able to:

1

Describe the value of developing criteria for evaluating proposals

2

Use scoring criteria to evaluate proposals

3

Document the reasons for selecting a subcontractor

4

Notify all respondents of their status

5

Process complaints from unsuccessful bidders

- Audiences: Agencies and Subcontractors
- Learning activities include developing and applying scoring criteria to evaluate proposals.
- Subcontractors can learn about the factors agencies consider in awarding contracts.

Minimum Requirements

1

Insurance

2

Experience

3

License

Evaluation

Select each bidder to see how they score.



Requirement	Value	Bid A	Bid B	Bid D
Fair market price	40			
Past Performance	20			
Experience	10			
References	10			
Completeness of the bid	10			
Woman/Minority/Small business	5			
Worker training and certification	5			
Total points	100			

Notifying Respondents of Their Status



When notifying unsuccessful candidates:

- Be prepared to offer feedback.
- Do not disclose information about other bidder's proposals.



Learning Pathway: the Economics of Weatherization

- Understanding Savings-to-Investment Ratio (SIR)
- The House as a System.

Understanding the Savings to Investment Ratio

By the end of this course, you should be able to:

1

Describe the principles of cost-effectiveness and savings-to-investment ratio (SIR)

2

Identify what can impact the SIR for each measure

3

Determine what can impact the total SIR for a job

- Audiences: Administrative staff, Field Crews, Utility staff
- Useful for understanding how weatherization projects are scoped, communicating cost-effectiveness.

Applying the Principles of Cost Effectiveness

Select each team member to learn about the SIR principles.



**Program
Manager**



**Crew
Leader**



**Energy
Auditor**

What Can Impact the SIR?

There are a number of factors that can impact the SIR calculation.

Select the tabs to view more information about what can impact the SIR.

Lifetime of the Measure

Fuel Cost

Measure Cost

Interaction of Measures

Incidental Repair Measures (IRM)

What Do You Think?

Choose a response and select Submit.

Can I still get my project done?

The client is declining the attic insulation. Can she still get the other planned measures?

No impact.

The overall SIR is below 1, and the job must be deferred.

The overall SIR is above 1, and the job can proceed.

SUBMIT



Learning Pathway: The Economics of Weatherization

- Understanding Savings-to-investment Ratio (SIR)
- The House as a System

The House as a System

By the end of this course, you should be able to:

1

Describe how a home's building components and mechanical elements interact as a system

2

Explain how WAP measures work together to optimize energy efficiency and health and safety

3

List the basic building science principles that underpin common weatherization measures

4

State examples of commonly installed weatherization measures

- Audiences: Fiscal staff, client intake, program managers
- Useful for helping nontechnical staff understand basic building science and how it affects production. Helpful for communicating to clients and non-WAP funders.

House as a System

Select the four markers to learn more.

Carbon Monoxide

Can enter the home from attached garages

Air Exits

Through recessed lighting fixtures, plumbing and mechanical chases and other penetrations between the attic and living space

The Manometer

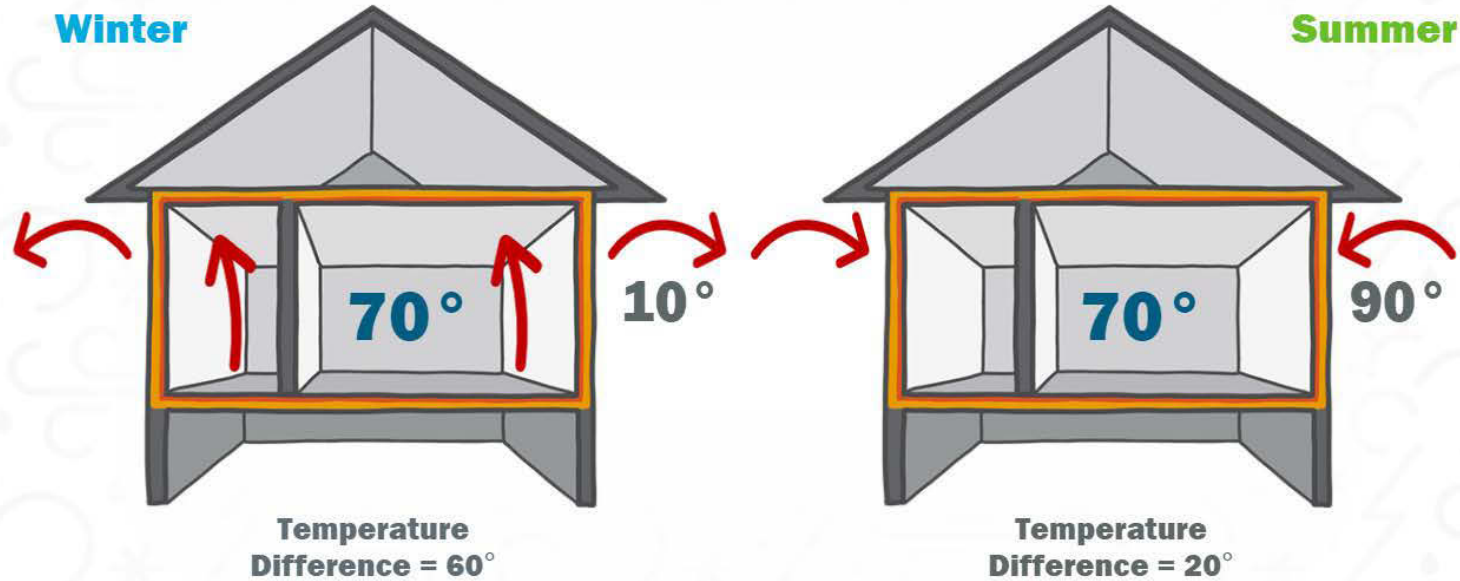
The number on the manometer represents the volume of air that the fan must move each minute to maintain that pressure difference.

350 CFM



Controlling Air Flow

Consider how controlling air flow, such as by sealing air leaks, affects other areas of the home...

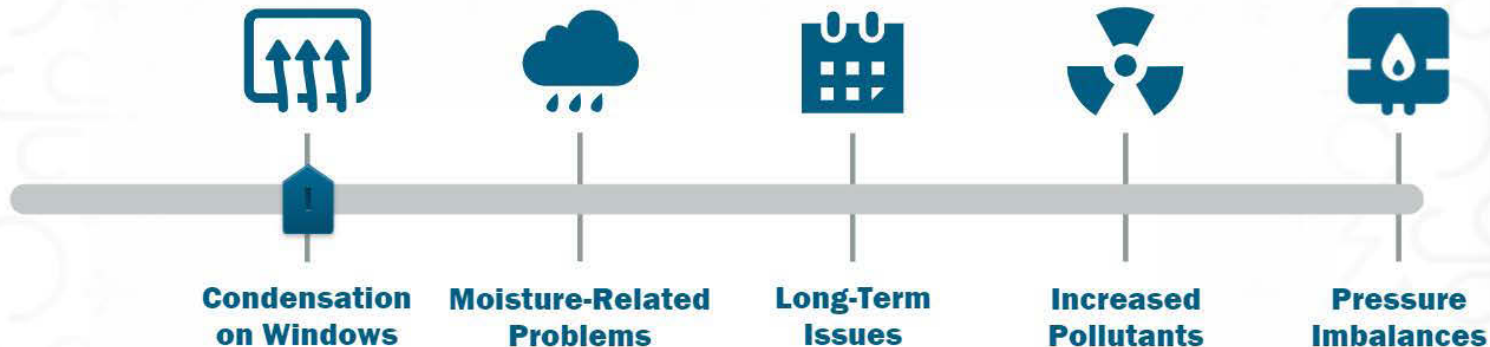


The higher the temperature difference, the more heat and air will escape the building.

Maintaining Balance

When installing weatherization measures, the key is to maintain the system's balance.

Move the slider to the right to see more.



Condensation on Windows

This can be exacerbated by reduced air exchange, resulting in increased moisture levels in the home. The windows will be the first place Eva will see signs of high relative humidity.

Course Content

- 29 Administrative trainings are grouped into the following learning paths:



Planning and Budgets



Procurement



Client Relations



Economics of Weatherization



Fiscal Tasks



Management



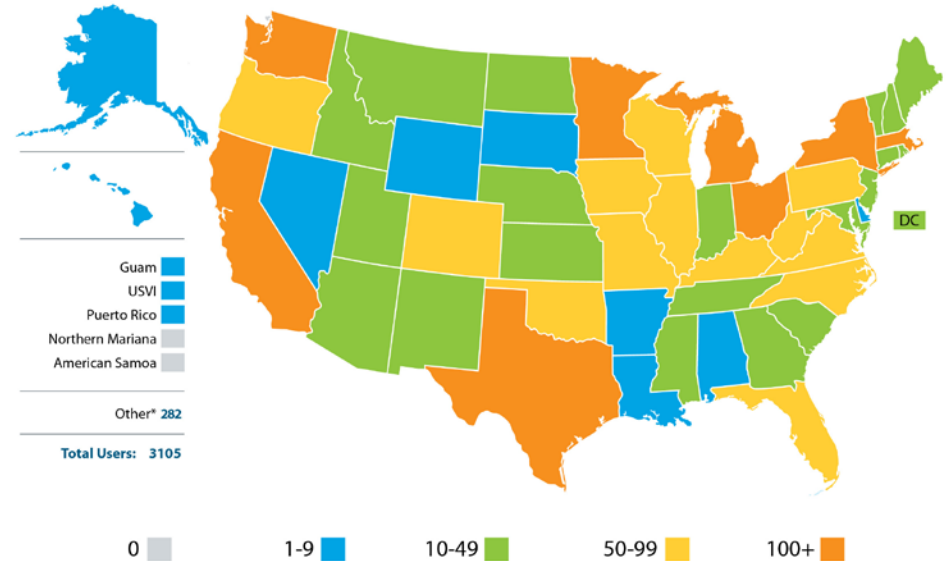
Quality Improvement



Multifamily Weatherization

Training Uptake

- So far, over 3,400 users have created accounts to take trainings.
- Widespread usage across the network.
- Over 21,000 courses completed.



User Locations as of November 24, 2020.

Q&A



 *Use the tab on the left to submit questions*



COVID-19 Workplace Safety Training

- In June 2020, the COVID-19 Workplace Safety course developed by the Energy Smart Academy was added to <https://wap.litmos.com>.
- Weatherization Assistance Program (WAP) stakeholders will have access to this training in both English and Spanish through June 2021.

The 4-hour course covers:

- Basics of the virus
- Safety precautions:
 - Office protocols
 - Home protocols
 - Contractor and crew protocols
- Communication.

Grantee Trainings

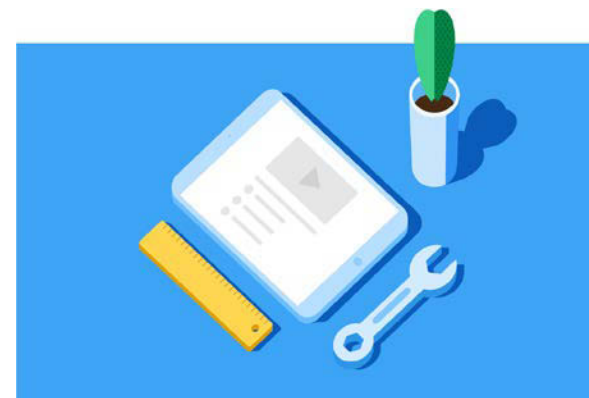
Grantee Trainings

- Similar to the Administrative Trainings, NREL and its partners are developing a series of trainings for WAP Grantees.
- Recruited a cohort of Grantee Subject Matter Experts to help develop the content.
- Anticipated launch in Spring 2022.
- If you are interested in helping during the review and pilot period before the new courses go live, please email the IREC team: credentialing@irecusa.org.

Installer Badges Toolkit

Installer Badges

- Within WAP, Job Task Analyses (JTA) are the basis for developing worker certifications and accredited training programs.
- In 2018, the WAP combined the Retrofit Installer Technician JTA with the Crew Leader JTA, eliminating the need for two separate qualifications.
- The tasks that were previously included in the Retrofit Installer JTA were developed into a series of task-specific badges.



Installer Badges Toolkit

- The Installer Badges Toolkit consists of 25 badges.
- Each badge defines a weatherization task or measure an install might perform in a home. Examples include:
 - Air Seal Attic Floor
 - Install Dense-Pack Sidewall Insulation
 - Install Exterior Roof Penetration
 - Work Lead-Safe.
- Toolkit was designed to be adopted by WAP programs and utility low-income energy efficiency programs.
- Download toolkit at: <https://sws.nrel.gov/installerbadges>.

Q&A



 *Use the tab on the left to submit questions*



A network diagram in the top-left corner consists of various circular icons connected by thin lines. The icons include a laptop, a globe, a house with a Wi-Fi symbol, a gear, a speech bubble, a document, and a person. The background of the slide is a dark blue with a subtle hexagonal pattern.

THANK YOU

Juliana Williams

Energy Markets and Policy Specialist
National Renewable Energy
Laboratory

juliana.williams@nrel.gov

NREL/PR-6A20-79774

This work was authored by the National Renewable Energy Laboratory, operated by Alliance for Sustainable Energy, LLC, for the U.S. Department of Energy (DOE) under Contract No. DE-AC36-08GO28308. Funding provided by the U.S. Department of Energy Office of Energy Efficiency and Renewable Energy Weatherization and Intergovernmental Program. The views expressed in the article do not necessarily represent the views of the DOE or the U.S. Government. The U.S. Government retains and the publisher, by accepting the article for publication, acknowledges that the U.S. Government retains a nonexclusive, paid-up, irrevocable, worldwide license to publish or reproduce the published form of this work, or allow others to do so, for U.S. Government purposes.