

U.S. OpenLabs

Promoting Clean Energy
Development through Access to
Tools, Data, and Expertise across
U.S. National Laboratories

About U.S. OpenLabs

To facilitate global access to cutting-edge clean energy analysis tools, databases, and other resources, the U.S. government has established the U.S. OpenLabs Web site.

OpenLabs provides access to a broad array of resources across the U.S. national laboratory network organized to answer specific technical needs and questions related to clean energy development and deployment.

openei.org/uslabs



OpenLabs Feature: Interactive Map of U.S. National Laboratory International Initiatives

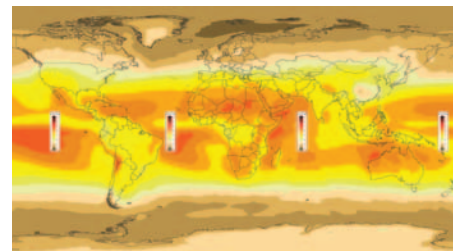
OpenLabs Technical Resources

Examples of tools and technical resources featured on the site to answer user-specific questions are listed below.

Where can I find information about the renewable energy resource potential in my country?

- Renewable energy resource maps and data
- Geospatial Toolkits (GsT)
- National Renewable Energy Laboratory (NREL) MapStore

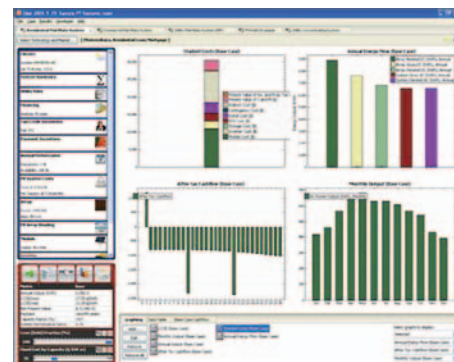
+ more



Global solar resource map

What software and information is available to help me screen and design renewable energy and energy efficiency projects or systems in my country?

- NREL's HOMER system optimization model and Solar Advisor Model (SAM)
- Brookhaven National Laboratory's (BNL's) MARKAL/TIMES strategic energy planning model
- Lawrence Berkeley National Laboratory's (LBNL's) Bottom-Up Energy Analysis System (BEST)



Solar Advisor Model (SAM) screen shot



- Argonne National Laboratory's (ANL's) Generation and Transmission Maximization (GTMax) Model
- Oak Ridge National Laboratory's (ORNL's) Geothermal Properties Measurement Tool

+ more

What laboratory research activities address climate change issues?

- LBNL's International Energy Studies
- Pacific Northwest National Laboratory's (PNNL's) Joint Global Change Research Institute
- ORNL's Global Change and Developing Country Programs
- NREL's Climate Change Activities

+ more

Where can I find information about government programs to incentivize clean energy development?

- DOE Multi-Lab Save Energy Now Program
- ORNL's Weatherization Program Evaluation
- NREL's State Clean Energy Policies Analysis Project (SCEPA)
- LBNL's Renewable Energy Market and Policy Analysis

+ more

Please visit openei.org/uslabs to explore all of the site's features. The network also welcomes your feedback on improvements for the site, which will be expanded over time. Suggestions on additional tools and resources from the U.S. national laboratories that should be included are also welcome. Please contact Sadie Cox at sadie.cox@nrel.gov for more information.



Structure of Climate Change Research at ORNL



Wind energy project

Todd Spink/PIX 16541

Photos below (left to right): Applied Power Corporation/PIX 08797, West Bengal Renewable Energy Development Agency/PIX 08904, Pacific Industrial Electric (PIE)/PIX 06132, Roger Taylor/PIX 01270, Elsen L. Karstad/PIX 12481.



U.S. DEPARTMENT OF
ENERGY

Energy Efficiency &
Renewable Energy

EERE Information Center
1-877-EERE-INF (1-877-337-3463)
www.eere.energy.gov/informationcenter

Prepared by the National Renewable Energy Laboratory (NREL)
NREL is a national laboratory of the U.S. Department of Energy
Office of Energy Efficiency and Renewable Energy
NREL is operated by the Alliance for Sustainable Energy, LLC

DOE/GO-102010-2958 • January 2010